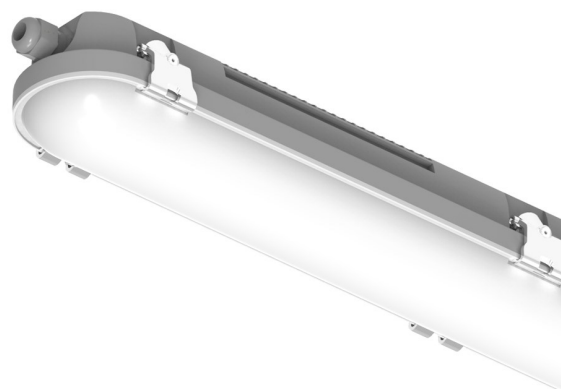


Aquila is a range of simple non-corrosive luminaires designed for a broad range of industrial and commercial applications. Sealed to IP65 with an IK08 impact rating, Aquila is tough enough for even the most demanding of environments. Aquila has a polycarbonate body and opal polycarbonate diffuser, and a Phillips driver is fitted as standard.

Aquila has a projected lifetime of 50,000 hours to L70 and is supported with a 5 year warranty



Key features

- Available in 1200mm and 1500mm lengths
- Up to 147 lumens per Watt
- 4000°K Colour temperature
- CRI: >80
- Sealed to IP65, Impact rating IK08
- L70 50,000 hours
- 5 year warranty

Order Guide

Code	Power (W)	Luminaire Lumens	CCT (K)	Weight (kg)	Optic	Dimensions (mm)		
						Length	Width	Height
AQ12/281940/OP	19	2793	4000	1.3	High efficiency diffuser	1190	73	75
AQ12/503640/OP	36	5013	4000	1.4	High efficiency diffuser	1190	95	75
AQ15/412940/OP	28	4116	4000	1.6	High efficiency diffuser	1490	73	75
AQ15/694740/OP	47	6945	4000	1.7	High efficiency diffuser	1490	95	75

Options

Code Suffix	Description
.../OP	High transmission opal diffuser (standard)
.../MW	Integrated microwave sensor, on/off
.../PIR	PIR sensor, on/off
.../E3	3hr integral maintained emergency