



lynx

Shelving systems



Lynx aluminium

Lynx aluminium offers retailers a powered shelving system which is versatile, adjustable and fully insulated for use with a variety of standard shelving systems.

Manufactured to BS EN60570:2003, the system is fully retrofittable and can be used in conjunction with Advance's Ara range of undershelf lighting.

Lynx removes the need for unsightly cables and connectors, improving the visual merchandising space and reducing maintenance costs.



Key features

- Fully insulated
- Rated at 10 Amps
- Easy to install
- Retrofittable
- BS EN compliant
- Bespoke options available



How Lynx aluminium works

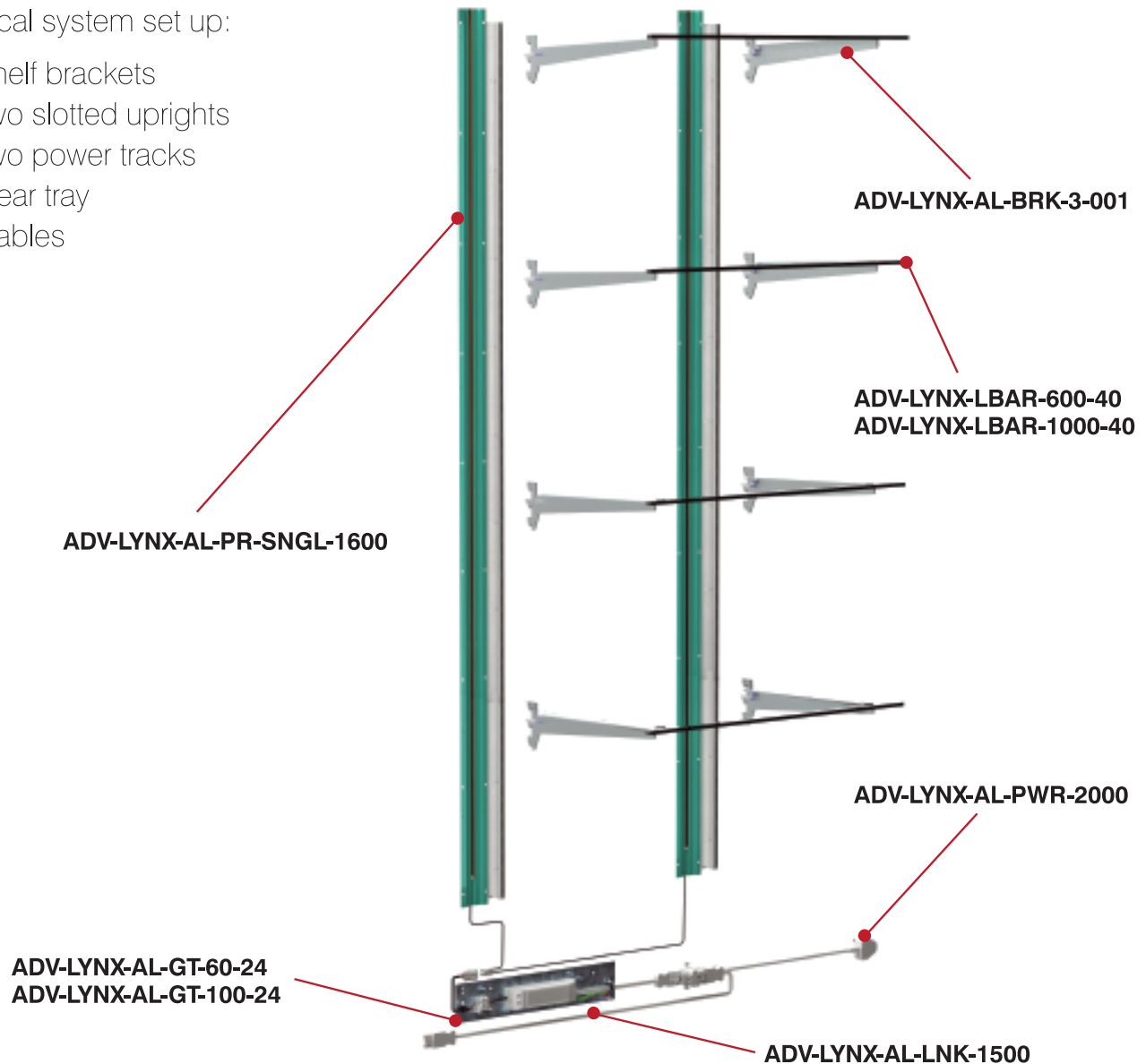
The Lynx aluminium power rail system uses a pair of standard 32mm slotted aluminium uprights. The power rail standard length is 1600mm but can be supplied in alternative lengths if required.

The power rail main busbar is manufactured from extruded PVC and houses a highly conductive copper strip which carries the 24V DC power supply. One rail is positive and the other side is negative. The extrusion is fixed to the rear of the slotted upright and is powered from the bottom of the rail by a gear tray.

The standard gear trays have either a 60W or a 100W driver fitted. When shelf brackets are inserted into the slotted uprights the contact engages, providing power to the LEDs.

Typical system set up:

- Shelf brackets
- Two slotted uprights
- Two power tracks
- Gear tray
- Cables



Case study: Hotel Chocolat

The brief

Following a period of sustained growth the premium luxury chocolatier, Hotel Chocolat, commissioned Advance International to review their existing lighting and shelving system within their stores.

The brief was to provide a stable, well lit system that was safe for employee's to adjust the shelving system.

Development

Advance visited a number of existing stores to evaluate the current system. Working alongside their design team, Advance made a number of changes to the existing furniture design. By upgrading the lighting specification using 4014 LEDs, Advance enabled the merchandise to be more visible and enticing to the public.

The next phase involved producing a complete manufactured prototype which was then signed off for production.

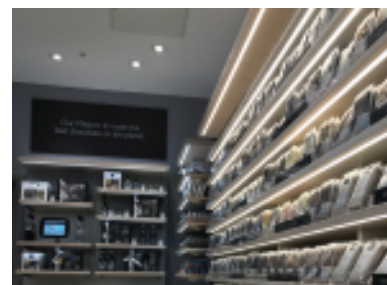
Delivery

Partnering with the incumbent furniture supplier, Advance project managed procurement of each individual store order and shipped on a three week lead time.

Summary

This system is now regarded as a premium, flexible and safe system. Adaptable by employee's to suit the store requirements, it also illuminates the merchandise uniformly.

Advance has completed numerous stores across the UK including Hotel Chocolat's UK flagship store at Covent Garden, London.



Lynx steel

Advance's Lynx steel is a wireless shelf system that provides a low voltage power supply to shelves when mounted in a gondola or wall bay shelving unit.

Lynx can be fitted into new and existing shelving whilst being compatible with Evolve, Eden, Tego, CAEM and other standard retail shelving.

Key features

- Patent pending design
- Retrofittable to existing shelving
- Easy to install
- Shelves can be fitted in any position
- Works with lighting or digital accessories
- No wiring
- Bespoke options available



How Lynx steel works

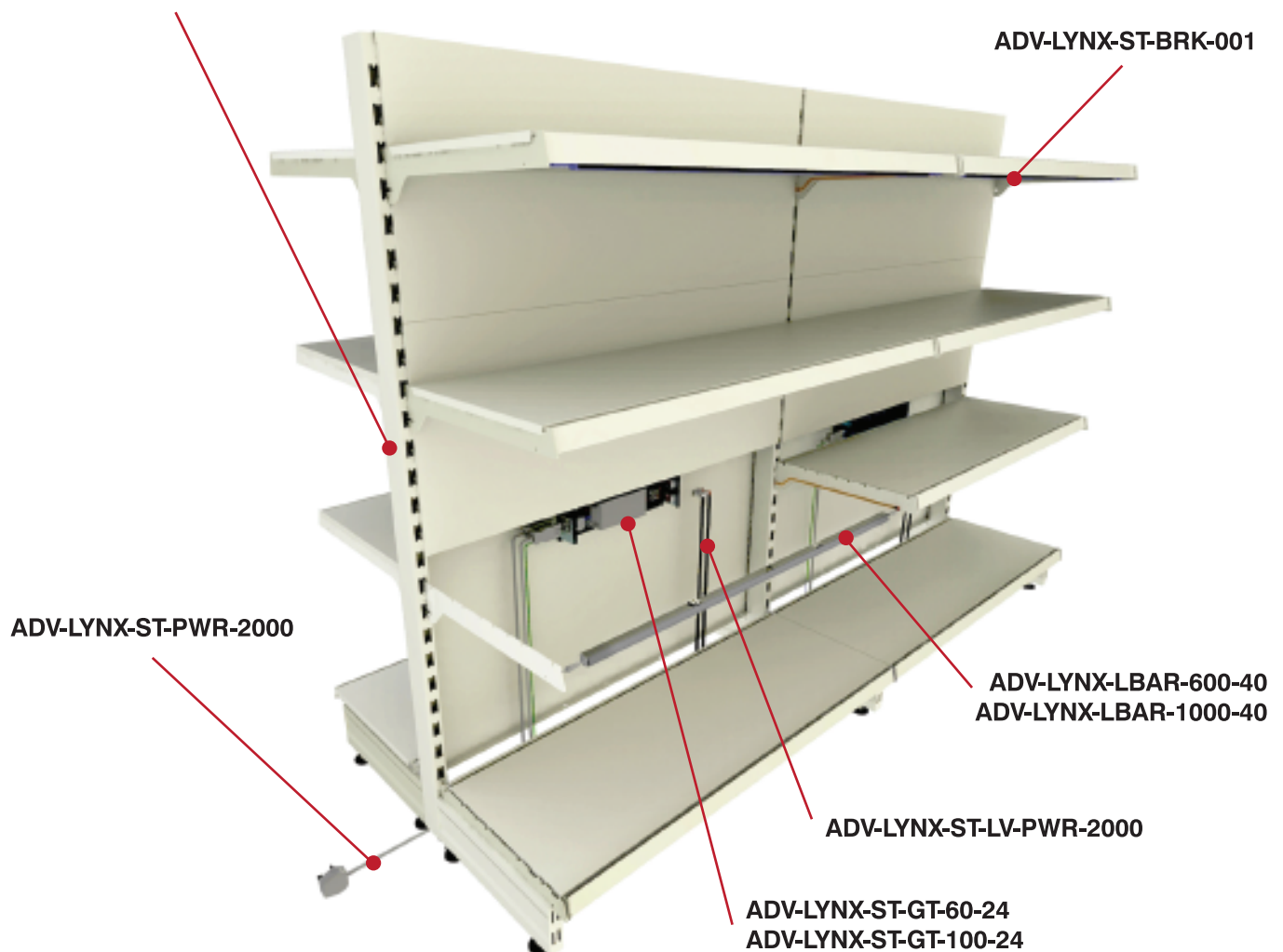
The Lynx steel system supplies 24V DC low voltage power to the shelves within a gondola or wall bay shelving unit, without the need for cables or connectors. Applicable for new installations, it is also designed to be easily retrofittable into existing shelving units.

The power rail incorporates a highly conductive copper strip to conduct the power and is taken from the rail via modified shelf support brackets. The electrical connection is made the moment the brackets are located within the uprights.

The most common application is for this system to illuminate the shelves with LED lighting, however the delivery of the low voltage power allows accessories such as digital ticket strips and illuminated opal acrylic shelving / light boxes to be added.

Typical system set up:

ADV-LYNX-ST-PR-1400-GON-STA
ADV-LYNX-ST-PR-1400-GON-CTR



Product codes

Lynx Aluminium

Description

ADV-LYNX-AL-PR-SNGL-1600	1600mm length power rail kit consisting of: 2 pcs 1600mm length single slotted upright double winged section 32mm pitch 2 pcs 1650mm length power tracks (positive and negative) with low voltage wiring to a 2 way connector
ADV-LYNX-AL-GT-60-24	60W 24V gear tray assembly consisting of: 60W 24V LED driver mounted to gear tray This includes 1000mm mains input cable and a 500mm low voltage output cable
ADV-LYNX-AL-GT-100-24	100W gear tray assembly consisting of: 100W 24V LED driver mounted to gear tray This includes 1000mm mains input cable and a 500mm low voltage output cable
ADV-LYNX-AL-BRK-3-001	Powered bracket set consisting of: 1 pair of stainless steel shelf mounting brackets (right and left hand) incorporating an electrical contact terminal
ADV-LYNX-LBAR-600-40	600mm length 4W Ara LED lightbar 24V 4000K including positive and negative input wires
ADV-LYNX-LBAR-1000-40	1000mm length 7W Ara LED lightbar 24V 4000K including positive and negative input wires
ADV-LYNX-AL-PWR-2000	2000mm length mains power in cable
ADV-LYNX-AL-LNK-1500	1500mm length linking cable set
ADV-LYNX-AL-SPLIT-1000	1000mm low voltage splitter cable

Lynx Steel

Description

ADV-LYNX-ST-PR-1400-GON-STA	1400mm length starter/end power rail for gondola including positive and negative input wires
ADV-LYNX-ST-PR-1400-GON-CTR	1400mm length centre power rail for gondola including positive and negative input wires
ADV-LYNX-ST-GT-60-24	60W 24V gear box assembly consisting of: 60W 24V LED driver mounted within steel enclosure with facility for mains input and output and the facility for up to four low voltage outputs
ADV-LYNX-ST-GT-100-24	100W 24V gear box assembly consisting of: 100W 24V LED driver mounted within steel enclosure with facility for mains input and output and the facility for up to four low voltage outputs
ADV-LYNX-ST-BRK-001	Powered bracket set 2 tooth consisting of: 1 pair of powder coated steel shelf mounting brackets (right and left hand) incorporating low voltage electrical terminal
ADV-LYNX-LBAR-600-40	600mm length 4W Ara LED lightbar 24V 4000K including positive and negative input wires
ADV-LYNX-LBAR-1000-40	1000mm length 7W Ara LED lightbar 24V 4000K including positive and negative input wires
ADV-LYNX-ST-PWR-2000	2000mm length mains power in cable
ADV-LYNX-ST-LNK-1500	1500mm length bay linking cable
ADV-LYNX-ST-LNK-2500	2500mm length bay linking cable
ADV-LYNX-ST-LV-PWR-2000	2000mm length power rail low voltage cable

Get in touch

+ 44(0)1332 865777
sales@adv.uk.com
www.advancelighting.co.uk

Advance International Ltd
1 Lowman Way
Hilton Business Park
Hilton
Derby
DE65 5LJ